

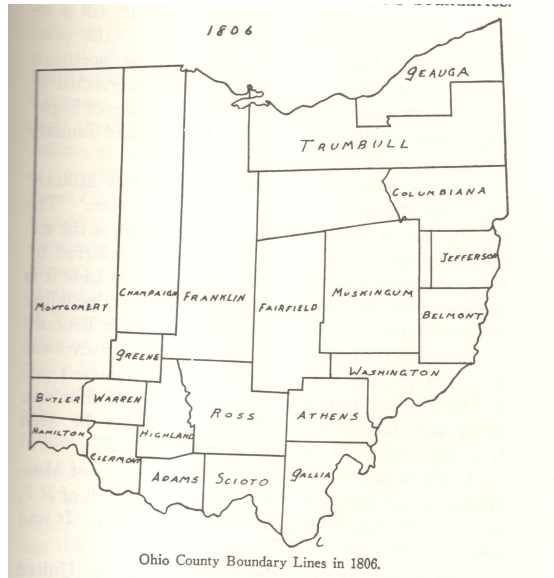
Athens County Historical
Maps and Photos

Courtesy of the Southeast Ohio
History Center

Lesson 2, Explore: Discussion of time and place

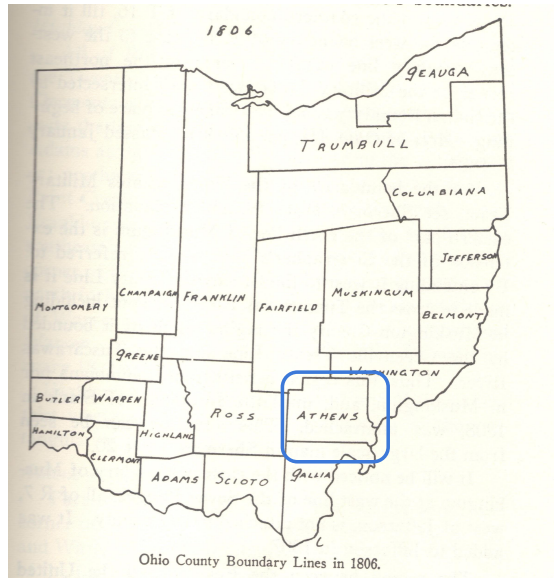
Let's take a look at some historical maps and photos of our state, county, and city.

County Boundaries in Ohio, 1806



Here is an image of what Ohio looked like in the recent past, from a little while before the box turtle hatched. Where is Athens County (circled on next slide)? Do you recognize its shape? What does Athens County look like now?

County Boundaries in Ohio, 1806



This is where Athens County was, soon after Ohio became a state (but a little while before our box turtle hatched). Do you recognize its shape? What does Athens County look like now?

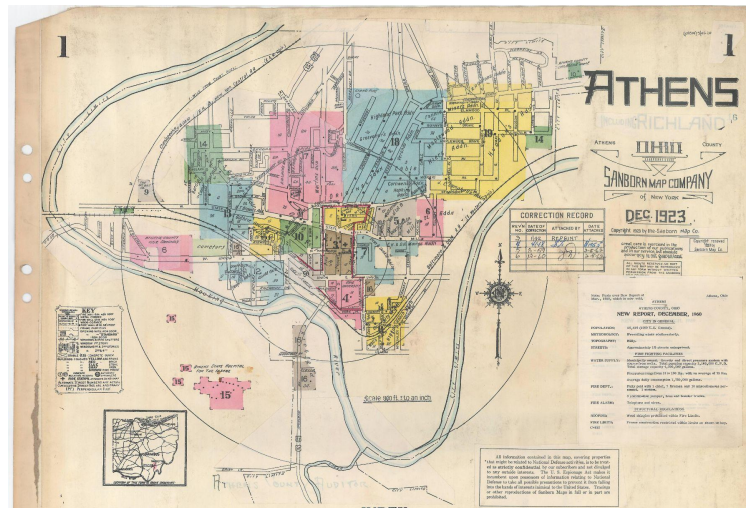
County Boundaries in Ohio, 2022



Here is our map of Ohio now - and there's Athens County. What looks different about these two maps? One of these is our map here and now, and the other one is from the recent past, a little while before the box turtle hatched.

(Note that this image is from Wikipedia)

City of Athens, 1923-1960

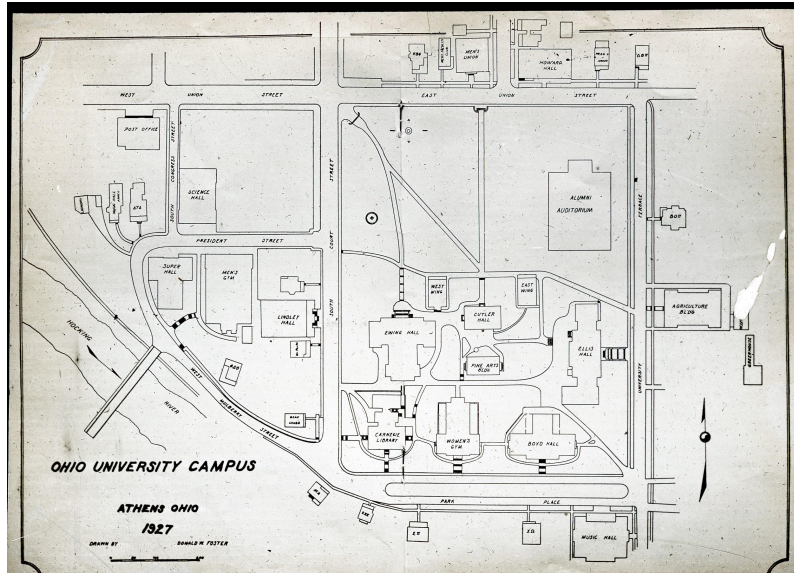


This is the City of Athens in the recent past. This map was made when the box turtle was alive, and maybe when some people we know might have been alive, or their parents or grandparents were alive (it was originally made in 1923, with updates and revisions as late as 1960). What do you see on this map?

Notice:

- The Hocking River (it's in a different location - this map was completed before the river was moved)
- Different colored blocks indicate different areas of town.
- The County Fairgrounds (pink box on lower left, just north of the river) (in the same location now)
- Ohio University Campus (pink box along the river, to the right of the fairgrounds) (the campus green is in the same location, but campus itself is much larger)
- Athens County Children's home (green box, in far upper right corner) (in the same location now)

Ohio University Campus, 1927



And here is a map only of the Ohio University Campus. On the map we just looked at, it's that little pink box. And here is a close up of what is in that little pink box. These are buildings on what we call the campus green. Several of them are still there, but many have been changed. For anyone who knows the campus green at all, you can see that Cutler Hall is still there, and its "east wing" and "west wing" are now called Wilson and McGuffey Halls. The Alumni Auditorium (now Templeton-Blackburn Alumni Memorial Auditorium) is still here.

The Ridges, the Convo, and
the Hocking River, 1970



Has anyone been to the Convo at OU? Can you find it here? What about the Ridges, or maybe the Child Development Center, or the Kennedy Museum there? We'll look more closely at the Ridges in a moment - right here, you can see the river in the process of being moved.

The Ridges Main Building Complex, 1932



And here are the main buildings at the Ridges. (Kennedy Museum and CDC circled on next slide)

The Ridges Main Building Complex, 1932



Here is the Kennedy Museum, at the top (blue circle), and the Child Development Center, the CDC, at the bottom.

The Ridges Land Lab, 1932



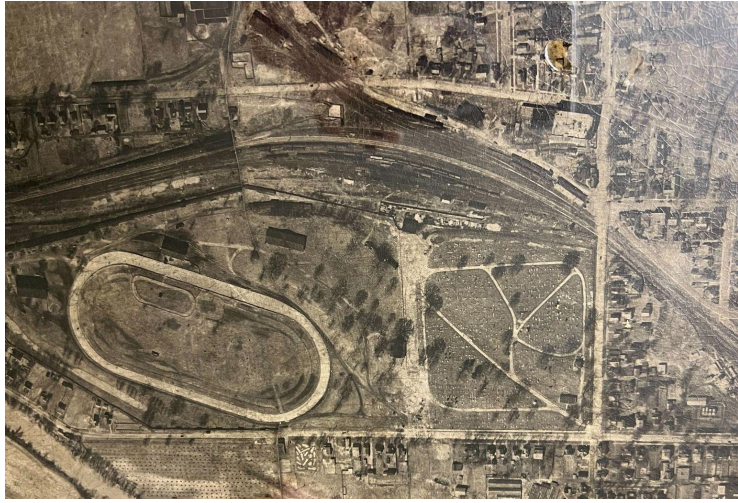
And if anyone has ever hiked at the Ridges - maybe you've been to Radar Hill? This field, what was probably an orchard (blue circle) is where it's mostly forested now, and there are trails for hiking. And on the side (green circle), this is probably where Radar Hill is.

Athens and Peden Stadium, 1950



Here is another view of Athens and Peden Stadium, where you might go for an OU football game. What looks the same or different?

Athens County Fairgrounds, 1932



You should be able to spot the County Fairgrounds pretty easily in this image. You can also see the nearby cemetery, Union Street, and S. Shafer St. in Athens.

Athens City Schools, 1932



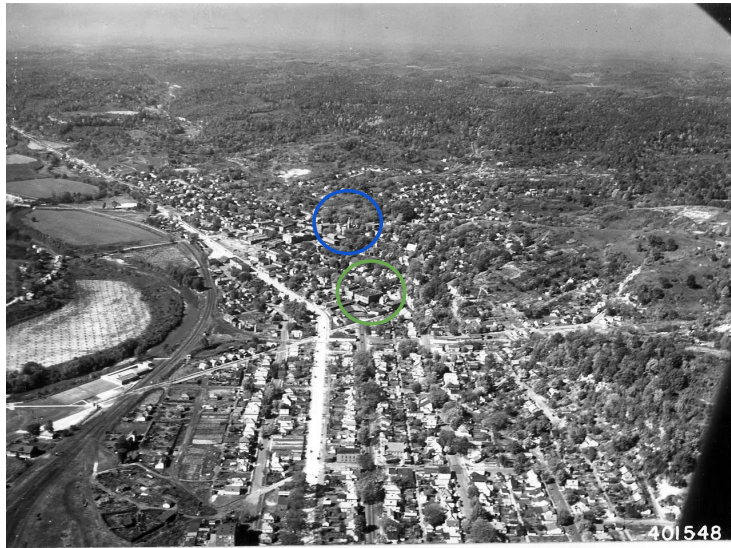
Here is Athens Middle School, when it was Athens High School (blue circle), East Elementary (green circle), and West Elementary (purple circle).

Nelsonville, 1950



Here is Nelsonville in the recent past. Can you see Canal Street, and where it meets W. Washington Street? Who knows where the school was before now? Our school isn't in this photo; do you think the old school is here? Can we find it? It's now the Nelsonville School Commons apartment building. What else can we see - what about the clock tower on the square?

Nelsonville, 1950



Here's the clock tower (blue circle), and the old school would be about here (green circle).

Chauncey, 1950



Do you recognize anything in Chauncey?

Buchtel, 1950



Do you recognize anything in Buchtel?

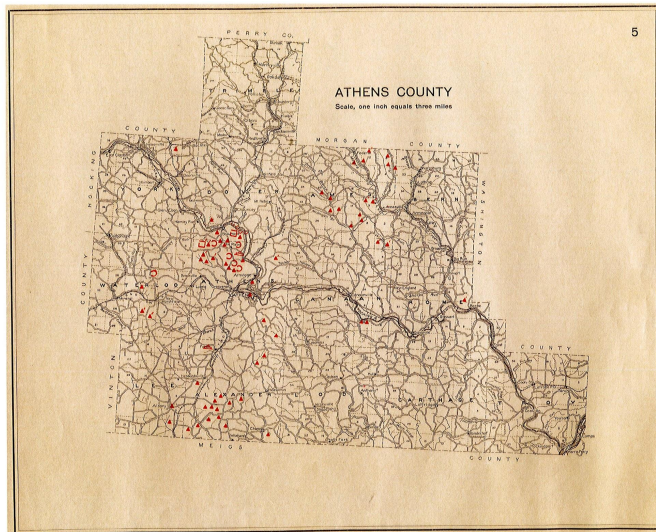
Hopewell Mounds in Ohio

Maps courtesy of the
Southeast Ohio History Center

Lesson 3, Engage: “Discuss long, long ago”

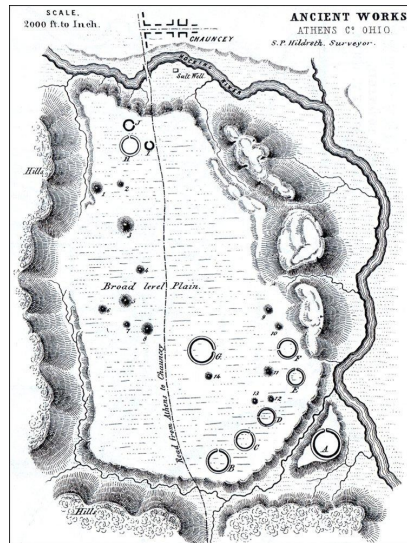
Let's look at a map of where some mounds have been found.

Known Mound Sites in Athens County,
as of 1904



This map shows some places in our county where mounds were built by people long, long ago. Mounds were re-discovered by people who lived in the recent past, and even today, people still find evidence of mounds.

Known Mound Sites in The Plains



This map shows the area that is now The Plains - where lots of mounds were built long, long ago.

The Hartman Mound, The Plains



The Hartman Mound is on Mound Street in The Plains. Has anyone seen this mound, or do you know about it?

The Hopewell Mound Group, Chillicothe



The Hopewell Mound Group is a site near Chillicothe (about 1-1.5 hours away), which is part of the National Park Service. In this spot, the park service re-created the mounds. They have some artifacts that are on display in a museum, and the park rangers share lots of information about the people who lived here long ago.



Lesson 3, Explore: Hopewell mounds and artifacts.

The next set of photos are of things that have been found in or near the mounds, artifacts. We can learn about people who lived before our memory from the things they left behind.

Pottery Vessel



Pottery container. Made of the resource clay.

Flint Disks



Flint disks - flint was carved, "knapped," to make lots of different shapes. You can see some carving marks on these. The resource used is stone.

Copper Raven or Crow Figure



This is a piece of copper that was hammered flat and then cut into the shape of a raven or crow. The resource used is metal.

Antler Woodpecker Carving



This is a carving of a woodpecker. It was carved from the natural resource bone, from a deer's antler.